

GBD Container

Description

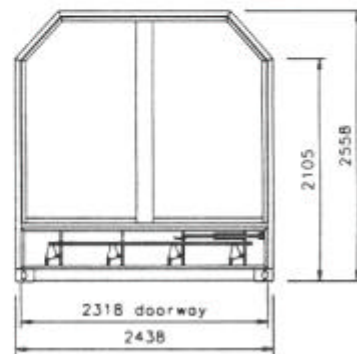
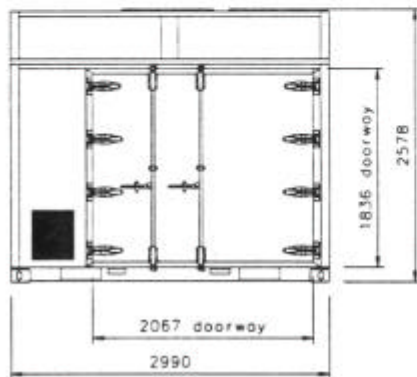
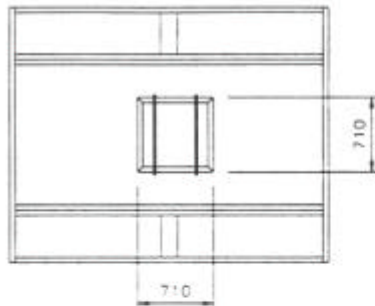
Bulk grain container.

Overall Length	2990 mm
Overall width	2438 mm
Overall height	2578 mm
Internal length	2920 mm
Internal width	2330 mm
Internal height	2305 mm

Tare	1370 kg
Load	10000 kg
Gross	11370 kg
Volume	14.9 m ³

Std ISO corners

Fork pockets 380 x 117 mm



Technical Data

Diagram	GBD3
General arrangement	X 29066
Clearance diagram	
Stencilling diagram	W 32228
Base assembly	X 29067
End frame assembly	X 29072
Door gear assembly	X 29076
Roof trap door	X 29079
Unload trap door	X 29069

Notes

Built by 1st Consolidated Ltd in 1970.
Lining material - plywood.